

始于方案...

For solution of your transportation...



Slag pot carrier



Application Fields

Desulphurizing slag
Dephosphorizing Slag
Desiliconized Slag

**Iron
Plant**

**Steel
Plant**

**Slag from
EAF
and
Converter**

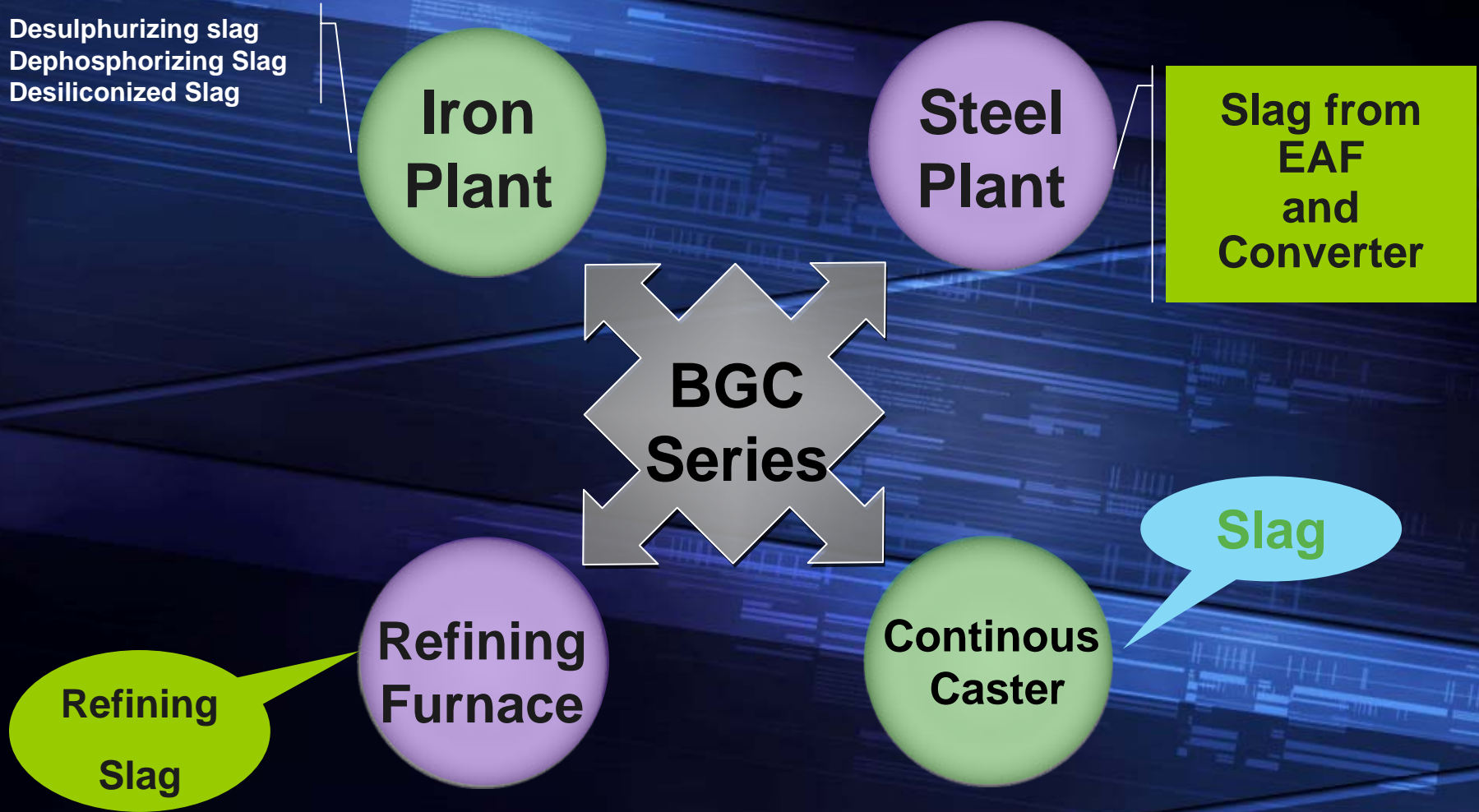
**BGC
Series**

Slag

**Refining
Slag**

**Refining
Furnace**

**Continuous
Caster**



Types

- **Articulated Type**

**Flexible steering , various capacities ,
matured technology.**

- **Tractor Type**

**Flexible steering , various capacities ,
matured technology , lower cost .**

Articulated type



Tractor type



Designing Features

BGC series

Suitable for narrow working environment

Smooth shifts

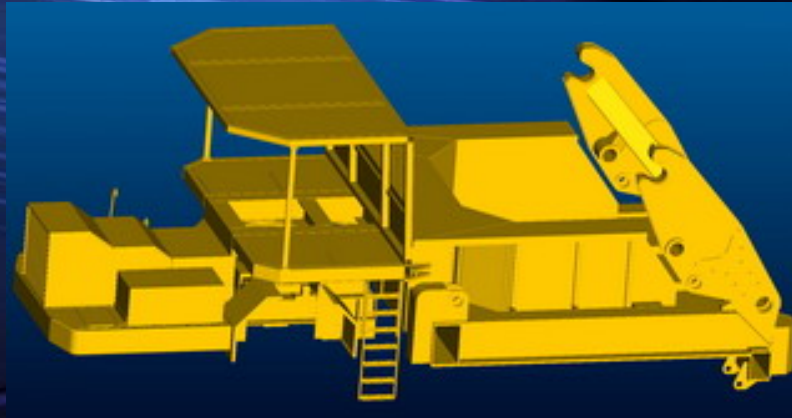
Big loading capacity

Reliable brake system

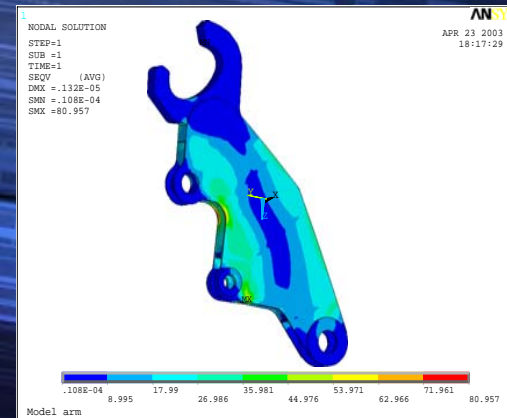
Optional functions

Engineering features

Three Dimensions Design



Movement Analysis



Finite Element Analysis

Optional Functions

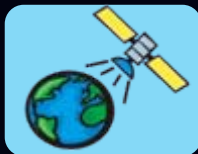


Self-weight
Measure
System

Automatic
Pot-knocked
Deslagging
System

GPS/GPRS
System

Remote
Control
System



Automatic Pot-knocked Deslagging System



35T--Tractor type



Dimensions
(Length×Width×Height)

~12,500×4,360×3,850 mm

Rated Payload

35,000 kg

Net Weight

~35,000 kg

Engine Power

158kW

Speed

25 km/h

Load Speed

15 km/h

Min Turning Radius

7.80 m

40t articulated slag pot carrier



Dimensions
(Length×Width×Height)

~9490×4,320× 4650 mm

Rated Payload

40,000 kg

Net Weight

~40,000 kg

Engine Power

179 kW

Speed

25 km/h

Load Speed

15 km/h

Min Turning Radius

10.80 m

45t articulated slag pot carrier

Dimensions (Length × Width × Height)	~10370 × 3770 × 4050 mm
Rated Payload	45,000 kg
Net Weight	~45,000 kg
Engine Power	179 kW
Speed	25 km/h
Load Speed	15 km/h
Min Turning Radius	7.80 m



45t tractor type slag pot carrier



Dimensions
(Length×Width×Height)

~9490×4,320× 4650 mm

Rated Payload

45,000 kg

Net Weight

~45,000 kg

Engine Power

179 kW

Speed

25 km/h

Load Speed

15 km/h

Min Turning Radius

10.80 m

50t articulated slag pot carrier



Dimensions
(Length × Width × Height)

11700 × 5400 × 4759mm

Rated Payload

50,000 kg

Net Weight

~50,000 kg

Engine Power

179kW

Speed

20 km/h

Load Speed

15 km/h

Min Turning Radius

7.80 m

60t articulated slag pot carrier



Dimensions
(Length×Width×Height)

10450×4210× 4150mm

Rated Payload

60,000 kg

Net Weight

~54,000 kg

Engine Power

191kW

Speed

20 km/h

Load Speed

12 km/h

Min Turning Radius

8.20m

始于方案...

For solution of your transportation...



Thank You !

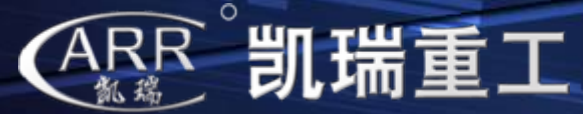
CHANGSHA KAIRUI HEAVY INDUSTRY MACHINERY CO.,LTD

No.96 Tongzipo Road, Changsha, Hunan, China. 410013

Tel:86-731-8903715 8905382 Fax:86-731-8903855

Web:www.carr.com.cn

P.c:410013



凯瑞重工